

Tenerife Sur: Short Walks Under 10 km

La Camella-Chayofa-Jungle Park Circular (Arona)

Route Summary

A walk above the main southern resorts, from La Camella, dropping to Chayofa, then ascending to above Jungle Park before returning. Great views to Los Cristianos and Las Americas.

Duration: 2.5 hours



Route Overview

Duration: 2.5 hours

Transport/Parking: Titsa 418 & 480 from Los Cristianos. Parking in La Camella.

Length: 6.850 km / 4.28 mi

Height gain: 250 meter

Height loss: 250meter

Max Height: 366 meter

Min Height: 214 meter

Surface: Average

Child Friendly: Yes

Difficulty: Moderate

Dog Friendly: Yes

Refreshments: Options in La Camella and Chayofa.



Description

This scenic circular walk provides a moderate workout to stretch your legs. It descends to the outskirts of the well-appointed Chayofa residential village development before ascending to the top end of Jungle Park. The ascent on this section of the walk, with Barranco del Rey on the left and Roque del Conde above you, is fairly steep but with excellent views all-around. The return, over abandoned hillside terraces is mostly downhill. La Camella is a tidy small Canarian town with a pleasant central shopping area with trees and shrubs.

Thanks to the [Tenerife Rambler](#) for the outline model for this walk on [Wikiloc](#).



Waypoints

(1) Start at church square in La Camella

(28.07928; -16.68201)

From the raised plaza in front of the church descend to street level and turn right onto the main street. Follow the Carretera General del Sur downhill for a couple of hundred metres, or so.



(2) Leave pavement for path

(28.07894; -16.68401)

After about 280 m, you will arrive at a large road sign giving distances for Las Americas and Los Cristianos. Veer right off the pavement here and take the rough path, running parallel with the pavement, with the high fence to your right. Continue following the path as you leave the outskirts of La Camella, keeping the main road fairly close to your left and below you. In another 400 m, or so, the path joins a section of private tarred road near a villa/ infant school. (283 m)



(3) Right off tarmac road here

(28.07669; -16.68831)

After another 540 m you leave the short section of tarred road that the path joined a little earlier. Proceed up the rough road. (820 m)



(4) Keep left above main road

(28.07497; -16.68914)

After another 180 m, keep left here, with Mt Guaza ahead of you on the skyline. Continue on this path, as it turns left towards the main road, then right again away from the road. Soon you will arrive at the outskirts of Chayofa at the tennis courts. Carry on past the tennis centre, walking on the pavement by the old main road, the Carretera General Antigua. (1 km)



(5) Turn sharp right here

(28.07298; -16.69448)

After a further 800 metres, you reach this junction at the Finca Chayofa where you turn up right for a short distance. (1.8 km)



(6) Then turn left here

(28.07339; -16.69418)

After 100 m, turn left at this junction by another bar/ restaurant and continue up Calle Taroso. (1.9 km)



(7) Veer left and down here

(28.07414; -16.69622)

After another 200 m, at this small roundabout, veer left and down Calle Arniche. (2.1 km)



(8) Right at junction here

(28.07179; -16.69951)

In 400 metres, walking downhill, you will arrive at another junction where you will turn right along Calle Tinguafaya. (2.5 km)



(9) Go left here

(28.07235; -16.70053)

In only another 100 m, turn left down Calle Risco Viceche which skirts the western side of Chayofa, starting to gently run uphill.

When the tarred road ends, continue walking up the rough road as it first veers left, then right. (2.6 km)



(10) Take path to left here

(28.07565; -16.69937)

After 700 m from the left turn at Waypoint 9, leave the rough road on the rising hillside for the path on the left here. Continue walking up this path as it first heads for the edge of Barranco del Rey, then heads away from it, then back again towards the Barranco, then finally heads towards the obvious greenery of the bottom end of Jungle Park. (3.3 km)



(11) Left and uphill by Jungle Park

(28.07868; -16.69815)

After a further 700 m, you will reach the tarred road that runs down the western side of Jungle Park. Continue walking up this road that will take you to the main entrance area for the Park. (4 km)



(12) Right at Jungle Park junction

(28.08178; -16.69444)

After 700 m you will have passed the entrance for Jungle Park and should turn right and downhill at this road junction. (4.7 km)



(13) Take path off road on left

(28.07886; -16.69457)

After 300 m, walking downhill, look out for this simple steel gate on your left across the road. Take the path past the abandoned old house. (5 km)



(14) Right and down here after ruined building

(28.07862; -16.69374)

In just 100 m, having passed the old house, turn right and downhill here. Continue down the twisting path through the old agricultural terraces and follow it until it reaches a quiet tarred road at the outskirts of Chayofa. (5.1 km)



(15) Left onto tarmac road

(28.07689; -16.69292)

After 400 m crossing the rough ground, turn left and down this stretch of tarred road on the outskirts of Chayofa. (5.5 km)



(16) Left off tarmac

(28.07671; -16.69159)

In just 200 m, the tarred road ends, blocked by some large boulders. Typically, cars are parked here. Look for a path leading back into the old terraces, clearly much used by dog-walkers. Follow the path as it goes gently downhill away from Chayofa, broadly back in the direction of La Camella. (5.7 km)



(17) Left onto tarmac

(28.07667; -16.68840)

Eventually, after another 300 m or so, you will reach the short stretch of private tarred road that you encountered in the early section of the walk. You will see the petrol station across the main road. Turn left here and walk towards the villa/ infant school that you passed earlier. From there, re-trace your steps back into La Camella. (6 km)



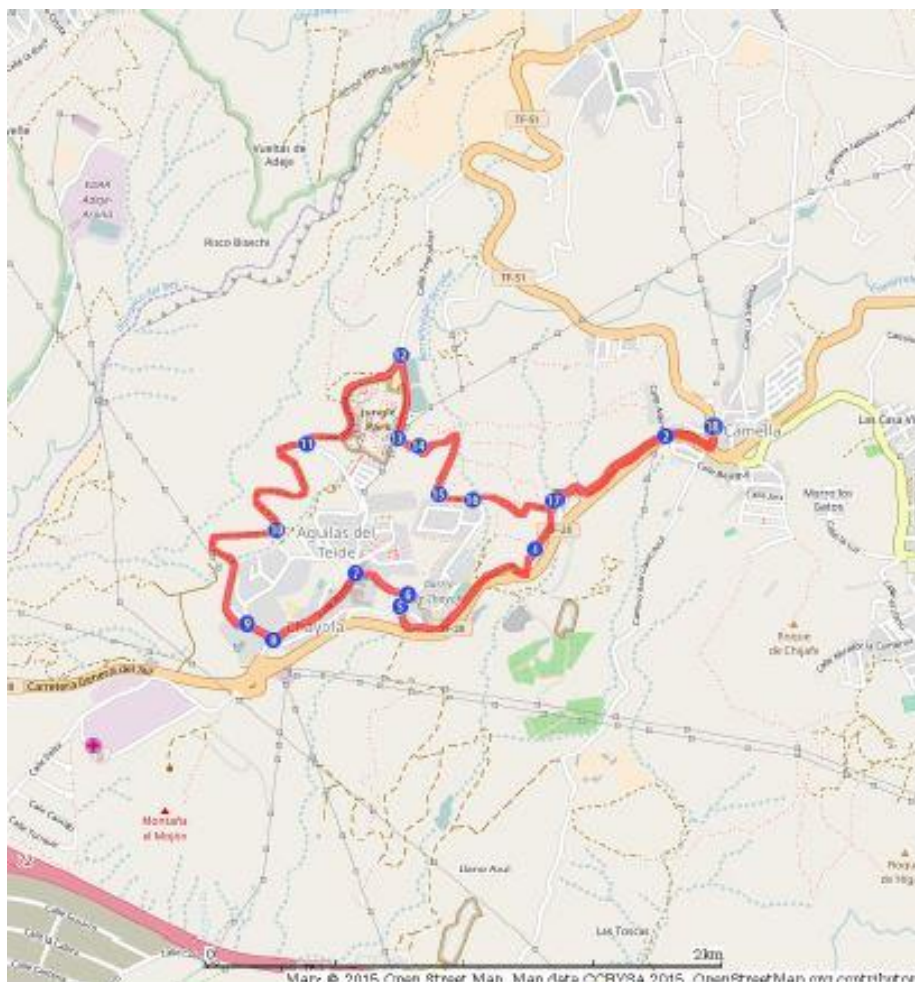
(18) End of walk

(28.07927; -16.68213)

After another 900 m you will arrive back at the edge of the church square in La Camella, (6.9 km)



Route Map



Links:

[Photos from walk](#)

[Download GPX file](#) (GPS Exchange Format)

[Download Route Guide PDF](#) (with illustrated Waypoints)

[Access Walk on Viewranger](#)

[Access Walk on Wikiloc](#)