

Tenerife Sur: Short Walks Under 10 km

Chiguergue-Camino Los Picachos-Chirche Circular (Guia de Isora)

Route Summary

This moderately strenuous walk ascends on an old camino, soon leaving Chiguergue behind as it climbs into the pine forest surrounding the TF-38 access road to Teide and the National Park, reaching a height of 1,100 m. On the descent we visit the delightful village of Chirche.

Duration: 4 hours



Route Overview

Duration: 4 hours.

Transport/Parking: Titsa 460 from Guia de Isora, then walk 25 minutes to Chiguergue. Park on main street, Calle Los Roques, in Chiguergue, by church.

Length: 7.820 km / 4.89 mi

Height Gain: 469 meter

Height Loss: 469 meter

Max Height: 1114 meter

Min Height: 720 meter

Surface: Rough. Parts of the walk are on tarred roads, although many other sections are on old rural paths surfaced by rough volcanic stone.

Child Friendly: Yes, but only if children are used to vigorous uphill hiking and rough surfaces.

Difficulty: Moderate.

Dog Friendly: Yes.

Refreshments: Two cafe/bars in Chiguergue. Mirador Cafe, above Chirche.



Description

This is a marvellous walk but it starts with a tough climb out of Chiguergue (which has many old buildings), and the unrelenting ascent continues on the aptly named Camino los Picachos (Peaks) for the first 2.5 km of the route. Of course, the many opportunities for fine views, including La Gomera and La Palma on a clear day, compensate, as does the wonderful aroma of warm pine forest all around you. The walk provides a great entrance to the pretty village of Chirche, descending from the Mirador Café high above. Many old buildings have been sensitively restored, and the village is a delight to stroll through. The route is mostly on rough old paths, sometimes a little overgrown. The final section joins the very quiet and scenic rural road between Aripe and Chiguergue.



Waypoints

(1) Start at church and plaza in Chiguergue

(28.22598; -16.78346)

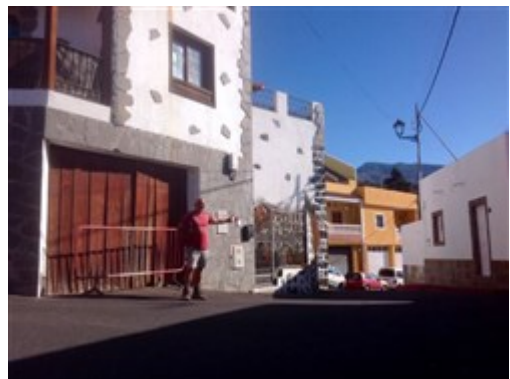
Leave the church plaza and walk up Calle Cervantes. Be prepared for a very steep ascent!



(2) Turn right at top of Calle Cervantes

(28.22722; -16.78178)

After just more than 200 m, at the top of Calle Cervantes, turn right for a short distance. (218 m)



(3) Left up the next lane

(28.22722; -16.78160)

In only 20 m, or so, turn left up the lane towards a cobbled path. (237 m)



(4) Veer slightly left and up old camino towards white house

(28.22852; -16.78014)

In just over 200 m, as you leave the village houses behind, veer slightly left and up an old camino towards a white house above you. The path may be a little overgrown. After you pass the white house continue on the access road to the TF-38 road. (450 m)



(5) Cross TF-38 road and up rough road

(28.23033; -16.77828)

In about 300 m, you will have arrived at the TF-38 main road (to Teide and the National Park). Cross the road and take the obvious route up the rough road with dry-stone walls. (739 m)



(6) Turn right at this junction in clearing

(28.23326; -16.77395)

In just over 560 m, ascending now on a rough and overgrown old path amongst pine trees, turn right at an obvious junction in a clearing, taking a rough path up a short slope. (1.3 km)



(7) Then left and up at top of slope

(28.23307; -16.77387)

In less than 25 m, at the top of the slope, turn left and uphill again. The path is rough and somewhat overgrown in places as you continue your ascent through the pine forest for another 1 km, or so. (1.3 km)



(8) Veer right and down

(28.23624; -16.76447)

After 1.1 km ascent, veer right and down at a junction, ignoring two options on your left to ascend. (2.4 km)



(9) Veer right and follow pipes

(28.23479; -16.76384)

In another 200 m, now gently descending through the forest, veer right and follow water pipes. Continue following these water pipes all the way back down to the TF-38 road. (2.6 km)



(10) Left and up side of TF-38

(28.22622; -16.76409)

In 1.1 km, passing a couple of farmed terraces, and upon reaching the TF-38 main road, go left and walk up the roadside for about 600 m. (3.7 km)



(11) Right for Mirador and Chirche

(28.22381; -16.75868)

In 600 m, turn to your right and cross the road with care, taking the signposted side road down to Chirche. On the way, you are likely to wish to visit the Mirador (and Mirador cafe, for a refreshment?) [note: not open on Saturdays]. (4.3 km)



(12) Right down path to Chirche

(28.22053; -16.75817)

In 400 m from the TF-38 main road, turn right to take an old path down into Chirche. (4.7 km)



(13) Right and follow Calle San Filipe

(28.21845; -16.75929)

In 300 m, having entered the village, go right at the bottom of Calle Tagara and follow Calle San Filipe as it takes you to the centre of Chirche, going past the church. (5.0 km)



(14) Turn right at Calle El Roquillo

(28.21912; -16.76060)

In 100 m, or so, just after passing the church, turn right at Calle El Roquillo. Follow this street as it starts to rise and becomes an old path (camino), now walking back in the general direction of Chiguergue. (5.1 km)



(15) Left and down at x-roads

(28.22153; -16.76468)

In 600 m, at a x-roads on the rough paths, go left and downhill. (5.7 km)



(16) Follow pipes

(28.22064; -16.76606)

In 100 m, or so, at a staggered junction veer very slightly right and follow the water pipes. (5.8 km)



(17) Continue to follow pipes

(28.22013; -16.76709)

In another 100 m, or so, ignore the path to your left and continue to follow the water pipes downhill. (5.9 km)



(18) Right and over pipes here

(28.21993; -16.76758)

In another 100 m, leave the path you are on to go right and over the main set of water pipes. Continue following this new path as it heads in the direction of Chiguergue. (6.0 km)



(19) Right at signpost for Chiguergue

(28.22144; -16.77181)

In 500 m, as you pass an area with farmed plots, go right at a walk signpost for Chiguergue, now walking on a narrow tarred road. (6.5 km)



(20) Left at Calle San Roque

(28.22544; -16.78062)

In 1 km, as you enter Chiguergue, go left at the old houses on Calle San Roque. (7.5 km)



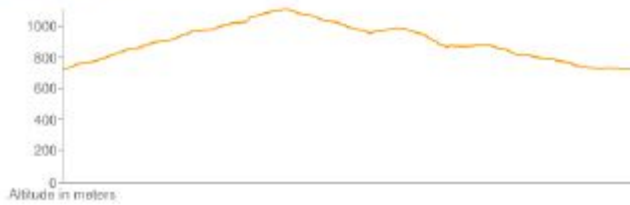
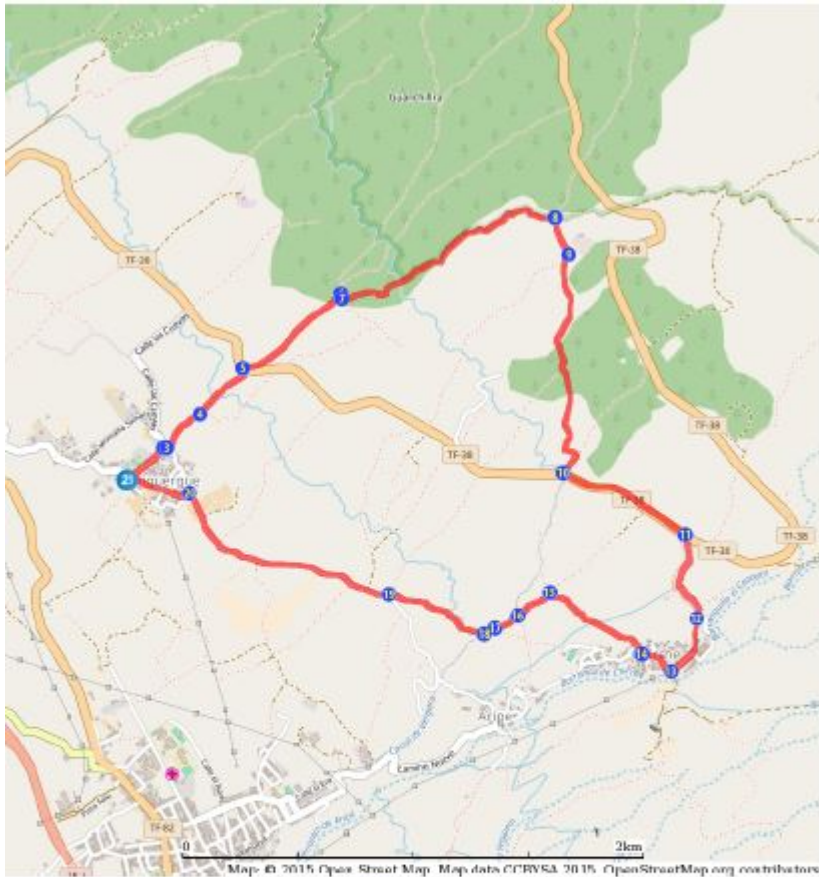
(21) End of walk back at church plaza

(28.22593; -16.78341)

In 300 m, after walking down Calle San Roque through the centre of Chiguergue village, past two bars and a small general store, you will have arrived back at the church plaza where you started the walk. (7.8 km)



Route Map



Links:

[Photos from walk](#)

[Download Route Guide](#) (PDF with illustrated Waypoints)

[Download GPX file](#) (GPS Exchange Format)

[Access Walk on Viewranger](#)

[Access Walk on Wikiloc](#)