

# Tenerife Sur: Short Walks Under 10 km

## Guia de Isora-Casa Ramallo-El Jaral Circular (Guia de Isora)

### Route Summary

This fairly strenuous walk is described as moderate to hard because of the tricky and demanding section crossing Barranco Ramallo (see walk Description). Otherwise, a fine walk on old paths, with great open views. El Jaral and Guia de Isora are both attractive and interesting places.

Duration: 4.5 hours



### Route Overview

**Duration:** 4.5 hours.

**Transport/Parking:** Titsa 460 or 417 from Adeje. Parking is available on the main road going through Guia de Isora, below the area of the church at the start of the walk.

**Length:** 8.290 km / 5.18 mi

**Height Gain:** 553 meter

**Height Loss:** 553 meter

**Max Height:** 908 meter

**Min Height:** 590 meter

**Surface:** Rough paths. The section between Waypoints 11 and 12 is very rough and steep requiring some scrambling with hands. Not recommended for children.

**Child Friendly:** No.

**Difficulty:** Moderate to hard.

**Dog Friendly:** Only if agile, calm and obedient.

**Refreshments:** Bar Central by the church in Guia de Isora is very convenient for a refreshment at the end of the walk. The guachinche "El Ventorrillo El Jaral" in El Jaral is popular, and serves traditional Canarian cuisine.



### Description

This is quite a demanding walk following old paths to an abandoned finca at Casa Ramallo, approximately 850 m above sea level. There are superb views from there down to the coast and up to the mountains. The next section, negotiating a steep and precipitous path in and out of Barranco Ramallo is clearly used by nimble-footed goats, but may not suit all human walkers! Read the information at Waypoints 11 and 12 before embarking on the route. A much gentler alternative route to El Jaral is indicated at Waypoint 7. El Jaral, overlooking the striking Barranco del Achacay, is a tranquil and pretty little place. The return route, joining the standard (SL TF 206) route to/from Guia de Isora makes for a fairly gentle final section to the walk. The historical centre of Guia de Isora, with many fine old buildings and new information boards, is well worth a stroll around.



## Waypoints

### (1) Leave from area of the church in Guia de Isora

(28.20962; -16.77841)

With your back to the main church doors go up to Calle La Vera and turn right to follow the street as it gently ascends. There are many fine old buildings to observe.



### (2) Left up Calle Las Britas

(28.20892; -16.77758)

In 125 m, when you arrive at the t-junction, turn left. (125 m)



### (3) Veer right here

(28.20964; -16.77640)

In another 150 m, or so, walking mostly uphill, veer right to follow the road. (268 m)



### (4) Veer right and down to path

(28.21017; -16.77533)

In 120 m, veer right past a house on your right to arrive at the walks signposts. Carry on walking on the rough path in the direction shown for El Jaral. (388 m)



## (5) Right for El Jaral

(28.20958; -16.76971)

After 600 m, on arriving at the walks signpost, go right for El Jaral. (989 m)



## (6) Right here

(28.20914; -16.76951)

In about 110 m, when you meet a rough road going uphill to a finca and goat farm, go right and downhill briefly. (1.1 km)



## (7) Sharp left down path

(28.20902; -16.76957)

Almost immediately, in 15 m, go sharp left and down onto a path that will take you in and out of a low barranco under the finca/goat farm on your left. When you ascend out of the low barranco go left, inland and uphill. Note, you are leaving the standard green/white marked path for El Jaral at this point. If you are not comfortable with the path crossing Barranco Ramallo between Waypoints 11 and 12 go right (not left) after ascending out of the low barranco by the finca and follow the much easier (green/white marked - SL TF 206) route to El Jaral. You will re-join the described route at Waypoint 13. (1.5 km)



## (8) Continue up hill

(28.21389; -16.76211)

In 600 m, walking uphill, carry on uphill here where the path becomes briefly indistinct. (2.1 km)





### (9) Right down here

(28.21460; -16.76006)

In another 200 m, walking uphill, and approaching a large plot with terraces on your left, veer right and down on the narrow path. (2.3 km)



### (10) Casa Ramallo

(28.21065; -16.75534)

In a further 1.2 km you will reach the ruined finca, Casa Ramallo. (3.5 km)



### (11) Veer right down hill

(28.21038; -16.75538)

Passing Casa Ramallo, veer right and downhill to follow a path that is indistinct at first. Soon, this path will start to descend into Barranco Ramallo. This path is rough, dropping steeply in places with exposed slopes on your right-hand side. It is clearly used by goats and may be partly eroded in places. Similarly, on the ascent out of the base of the barranco it is often narrow and exposed. It is also easy to miss Waypoint 12 where the path finally takes you out of the barranco by clambering up and over large boulders. If you miss Waypoint 12 it is possible to follow the goats' path into quite a dangerous and precipitous situation. Immediately re-trace your steps and find Waypoint 12 if you find yourself in this situation.

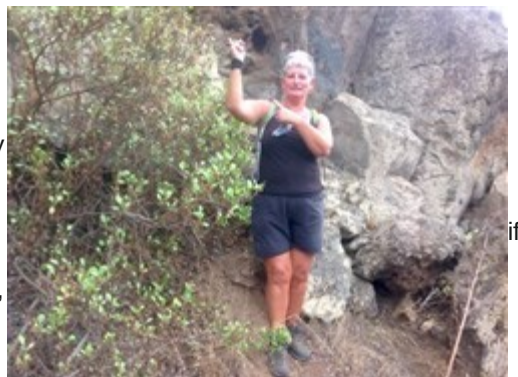


**IF YOU ARE NOT COMFORTABLE WITH THIS DESCRIPTION YOU SHOULD FOLLOW THE ALTERNATIVE, MUCH EASIER, ROUTE DESCRIBED AT WAYPOINT 7.**

### (12) Up and over large rocks

(28.20760; -16.75653)

In 800 m from Waypoint 11, having descended into Barranco Ramallo and ascended the other side take care to identify this spot where the path ascends sharply uphill and takes a route over the large boulders forming a low cliff above you. It is easy to miss this waypoint. If you miss Waypoint 12 it is possible to follow the goats' path into quite a dangerous and precipitous situation. Immediately re-trace your steps and find Waypoint 12 if you find yourself in this situation! Once you have ascended the path between and over the large rocks, follow the path downhill, with wooden crosses on your right. (4.3 km)



### (13) Left and down at white-green markings

(28.20686; -16.75766)

In just 100 m, you will join the standard green/white marked path for El Jaral (SL TF 206). Go left and downhill, following the green/white marker. The path will take you into the outskirts of El Jaral where you should follow the tarred road to a t-junction with Calle Santiago Apostol. (4.4 km)



### (14) Left onto Calle Santiago Apostol

(28.20437; -16.75594)

In 400 m, at the t-junction, go left past the walks information board onto Calle Santiago Apostol and follow it as it winds up through the village. (4.8 km)



### (15) Continue past walk signs in El Jaral

(28.20395; -16.75535)

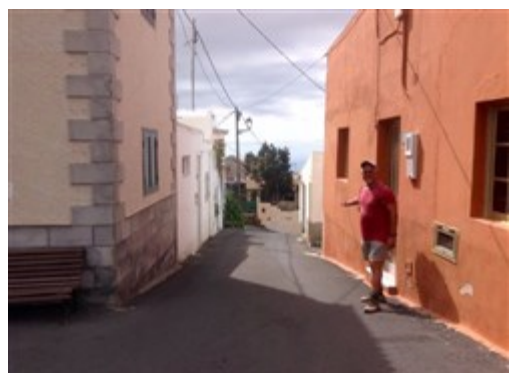
In another 100 m, you will pass another walks information board and signs. Carry straight on. (4.9 km)



### (16) Down here to leave village

(28.20328; -16.75618)

In another 100 m from the walks information board and signs, follow the road as it narrows between houses, taking you out of the village. When you leave the village and reach the bottom of the hill at the road junction, veer left onto the main access road for El Jaral and go downhill for a short distance looking for an opening on your right after fencing and a large roadside bin. (5.0 km)



### (17) Right and down briefly

(28.20323; -16.75877)

In 400 m, having turned left at the junction with the main access road for El Jaral, walk down the road a short distance, passing a roadside bin. Then, turn right to go briefly down the concrete access road to a finca. (5.4 km)



### (18) Left onto old path

(28.20360; -16.75867)

Go down the concrete road for just over 20 m, then go left onto the old path with a concrete surface at first. (5.4 km)



### (19) Carry on down

(28.20400; -16.76091)

In another 300 m, where the path meets a concreted road, carry on ahead and gently downhill. (5.7 km)



### (20) Right onto narrow path behind wooden building

(28.20386; -16.76194)

In 100 m, or so, watch out for an indistinct path on your right going off the concrete road, over a pipe. After a short downhill section the path goes behind a wooden building and heads off in a NW direction towards Guia de Isora. Fairly soon, the path will join the green/white marked SL TF 206 route. Carry on downhill towards the main road. (5.8 km)





## (21) Follow signed path up Guia side of barranco

(28.20617; -16.76942)

In 1 km, after the path you are following has descended to the level of the main TF-82 road, follow the SL TF 206 walks sign for Guia de Isora which rises on a paved track out of Barranco Tanse. (6.8 km)



## (22) Left and down here near finca

(28.20871; -16.76884)

In 400 m, with the finca/goat farm you passed earlier ahead of you on the hillside, go left and down into the low barranco. (7.2 km)



## (23) Right then left

(28.20899; -16.76964)

In 100 m, after ascending out of the low barranco beneath the finca/goat farm, go sharp right then almost immediately left towards the walks signs that you can see ahead of you. (7.3 km)



## (24) Re-trace steps back to Guia

(28.20954; -16.76979)

In just 100 m, at the walks signs, veer left to follow the SL TF 206 sign for Guia de Isora, re-tracing your steps back into the town and then finishing the walk at the church where you started. (7.4 km)



## (25) Finish near church

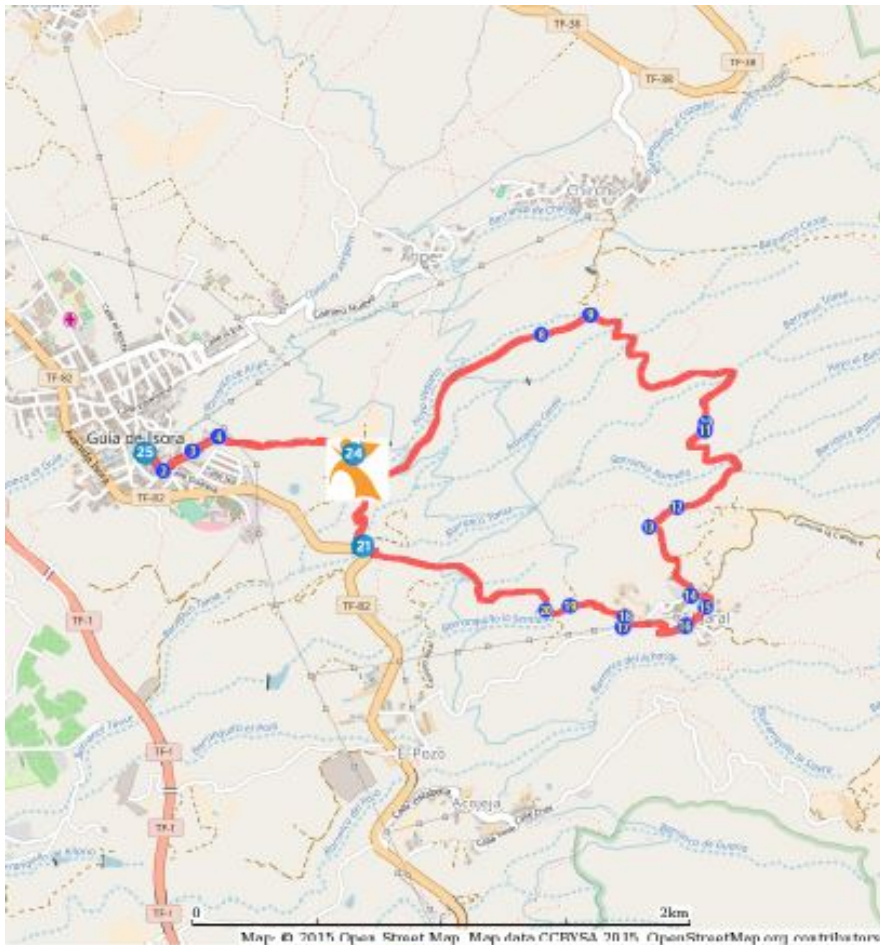
(28.20957; -16.77834)

In 900 m you have arrived back at the area by the church where you started the walk. (8.3 km)





## Route Map



### Links:

[Photos from walk](#)

[Download Route Guide](#) (PDF with illustrated Waypoints)

[Download GPX file](#) (GPS Exchange Format)

[Access Walk on Viewranger](#)

[Access Walk on Wikiloc](#)