

Tenerife Sur: Short Walks Under 10 km

Tamaimo-Guama Circular (Santiago del Teide)

Route Summary

An exhilarating and energetic hike to the peak of Montana Guama, looming over Tamaimo between Santiago del Teide and Los Gigantes. A sequence of breathtaking views in all directions throughout the walk compensate for the sometimes difficult route.

Duration: 4 hours



Route Overview

Duration: 4 hours

Transport/Parking: Suggest Titsa 473/477 from Los Cristianos to Los Gigantes, then 461/462 to Tamaimo. Easy parking in Tamaimo.

Length: 5.700 km / 3.56 mi

Height Gain: 505 meter

Height Loss: 505 meter

Max Height: 851 meter

Min Height: 563 meter

Surface: Moderate to very rough.

Child Friendly: No.

Difficulty: Hard.

Dog Friendly: Only if your dog is calm, agile and obedient.

Refreshments: Cafes in Tamaimo.



Description

Although not long, this is a strenuous walk involving a considerable overall ascent/descent of 505 m. Setting off from the traditional Canarian town of Tamaimo on the old Camino Real ("royal road") from Puerto Santiago to Santiago del Teide, we then take another old path that climbs up to the Degollada del Roque ridge where stunning mountain views open up of the southern Teno region. Then, following a narrow and, at times, rocky and precipitous path, we traverse the upper section of the wonderfully scenic Barranco Manchas de Las Diaz and its backdrop, heading towards the coast and the Los Gigantes cliffs. Although this section is exhilarating, and quite safe if suitable care is taken, some walkers may be uncomfortable in places, particularly if they suffer from vertigo. The walk then reaches a wonderful viewpoint (with Tibetan prayer flags) – offering splendid vistas of the barranco, aspects of the Teno mountains, the coastline and La Gomera. On the return section of the walk, there are extremely good views from the peak of Montana Guama of the Tamaimo area, the western coast, and up to Teide. The descent to Tamaimo, passing the impressive "Cross of the Missionaries", although not exposed, is rocky and steep in places, involving some rock scrambling using hands, feet and posterior!



Before embarking on this marvellous walk, please consider if it is suitable for you.

Thanks to [Gary Rosson](#), for the inspiration for this walk. His longer route, with a different descent, can be found here on [Wikiloc](#).

Waypoints

(1) Start at church plaza

(28.26817; -16.82060)

After taking in the view from the church plaza, walk towards the rear of the church to Calle El Agua.



(2) Left along Calle El Agua

(28.26854; -16.82027)

In 50 m, at the rear of the church, by the walks signpost, turn left to follow the signed route along Calle El Agua. (50 m)



(3) Left up signposted lane

(28.27011; -16.82086)

After about 200 m, leave Calle El Agua, turning left down a short lane. Almost immediately, turn right, walking past a house on your left as the road narrows to a rough path. (242 m)



(4) Veer right at signs on Camino Real

(28.27113; -16.82196)

In another 160 m, the path enters the bed of a low barranco where you carry on, veering a little right at signposts to cross the old watercourse and start ascending towards another signpost a little uphill ahead of you. (405 m)



(5) Right on Camino Real

(28.27139; -16.82268)

In just 90 m, on reaching the signpost, turn right to follow the Camino Real heading up towards Santiago del Teide. (498 m)



(6) Left and up off Camino Real

(28.27904; -16.82083)

After following the old Camino Real uphill for approximately 900 m, turn left at the signpost to follow the route marked as El Molledo (Degollada del Roque). Carry on as it wynds its way uphill. (1.4 km)



(7) Left at Degollada del Roque

(28.27932; -16.82326)

In 500 m, reaching the Degollada del Roque viewpoint, go left to follow the, at first, poorly defined track. (1.9 km)



(8) Ensure you veer right here

(28.27917; -16.82340)

In just 20 m, or so, ensure you veer a little right as the path becomes better defined. Keep following this path, with great views of Barranco Manchas de Las Diaz, but look out for a sharp turn up to your left in about 200 m, as the path you are on starts to drop into the ravine. (1.9 km)



(9) Sharp left and up steep path

(28.27747; -16.82454)

In 200 m, as the path starts to descend, take a sharp turn left and up onto a more precipitous and less distinct track. Follow this narrow, at times rocky, track around the side of the ravine.

Note: If you suffer badly from vertigo you may find some parts of this section of the walk difficult. There is an option to re-trace your steps to Waypoint 7 and take the broad and easy path up to El Molledo, returning down the Camino Real path to your start-point in Tamaimo.



(10) Veer left after rocky viewpoint

(28.26973; -16.83141)



After 1.3 km on the narrow, at times rocky, path above the spectacular ravine you will ascend to a rock-peaked viewpoint with great views of the Teno Mountain range and its immediate coastline below you, then across the channel to La Gomera. When we did this walk in August 2017 the viewpoint was adorned with Tibetan prayer flags, fluttering in the breeze. To move on, veer left to follow



the open path around the hillside with impressive views down to Los Gigantes and Puerto Santiago opening up far below you on your right. (3.4 km)

(11) Take path up to top of Guama

(28.26729; -16.82961)

After 300 m, the path has swung around to also provide views down to Tamaimo and along the west coast of the island. Turn left here to start ascending on the yellow/white marked trail to the top of Montana Guama. You may wish to stop at the top, diverting a few metres to your right to take in the marvellous views down to Tamaimo and upwards towards Teide. Keep following the path as it then starts to descend towards Tamaimo. The descent is steep and rocky in places but is not exposed. (3.7 km)



(12) Detour to cross then continue down

(28.27214; -16.82654)

After 800 m, now descending towards Tamaimo, take the short diversion to the 'Cross of the Missionaries' (there is an explanation of its origin on the walks signpost at the church start/end point). Return to the main path and continue down to Tamaimo, eventually following the path back into the town that you took on your outward journey. (4.5 km)



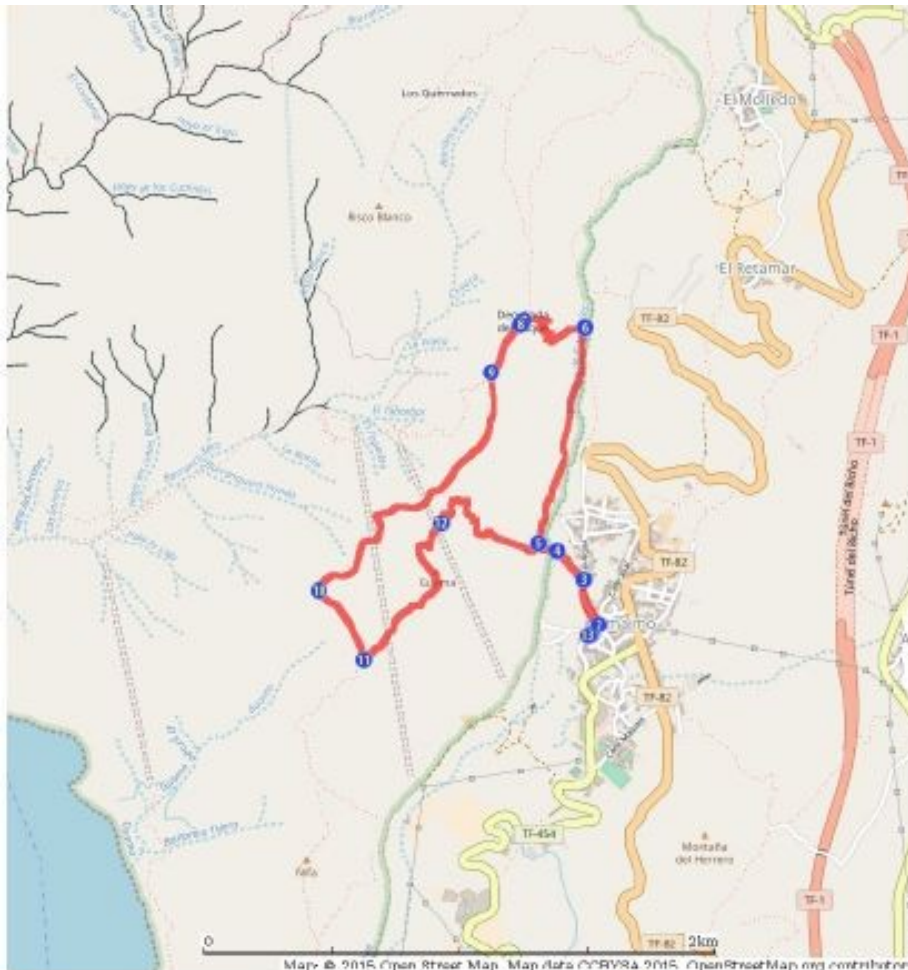
(13) Finish walk back at church plaza

(28.26817; -16.82069)

In 1.2 km from the cross you will have arrived back at the church plaza where you started the walk. (5.7 km)



Route Map



Links:

[Photos from walk](#)

[Download Route Guide](#) (PDF with illustrated Waypoints)

[Download GPX file](#) (GPS Exchange Format)

[Access Walk on Viewranger](#)

[Access Walk on Wikiloc](#)