

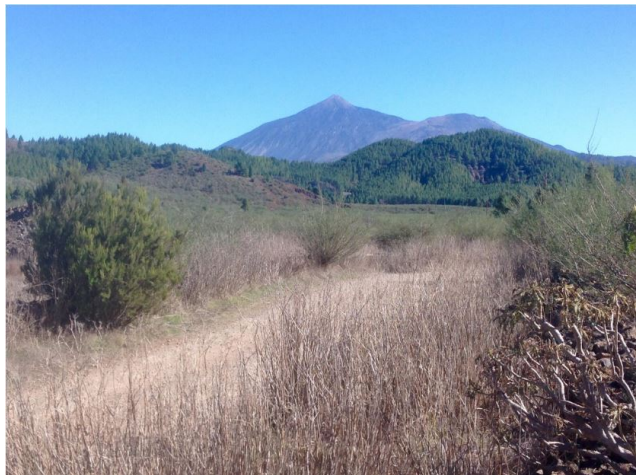
# Tenerife Sur: Short Walks Under 10 km

## Valle de Arriba-Los Partidos Circular (Santiago del Teide)

### Route Summary

This moderate walk climbs out of Valle de Arriba to go around the forested conical peak of Montaña Tomaseche. There is a pleasant and interesting potential stop-off at the Casa Rural of Los Partidos before the returning descent, overlooking the scenic vale of Santiago del Teide.

Duration: 3 hours



### Route Overview

**Duration:** 3 hours.

**Transport/Parking:** There is no longer a bus service to Valle de Arriba. 25 minutes walk from Santaigo del Teide. Easy parking on road near start of walk.

**Length:** 6.060 km / 3.79 mi

**Height Gain:** 278 meter

**Height Loss:** 278 meter

**Max Height:** 1174 meter

**Min Height:** 982 meter

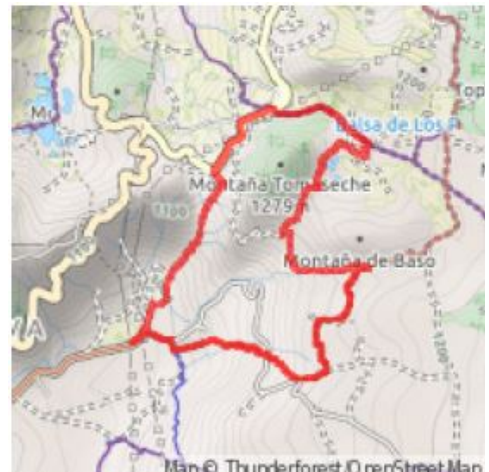
**Surface:** Rough.

**Child Friendly:** Yes, but only if children are used to vigorous uphill hiking and rough surfaces.

**Difficulty:** Moderate.

**Dog Friendly:** Yes.

**Refreshments:** The Caserio de los Partidos, on the walk, offers drinks and tapas snacks. A number of options on the main street in Santiago del Teide.



### Description

This is a very pleasant and relatively undemanding walk at just over 6 km and under 300 m overall ascent. The initial section of the route climbs steadily out of the tiny hamlet of Valle de Arriba on a very old path, called "Wet Shoes", once used by the farmers of San Jose de los Llanos to access water sources in the valley. The path, under the shadow of the steeply sided Montaña Tomaseche, was often wet, it seems, but as the current drought continues, not so during our visit. There then follows a short section along the verge of the main TF-373 road to Los Llanos before taking a rough country road to the Casa Rural – Caserio de los Partidos where there is a huge threshing circle (era). The Caserio is full of charm and character and is an inviting spot for a refreshment. This area, under the imposing conical wooded hillside of Montaña Tomaseche, provides the opportunity for some splendid views of



of Teide, Pico Veijo and the pine-forested Chinyero landscape. The return route takes in the "Vaguada de los Ovejeros" (Trough of the Shepherds), opening up to good views of Montaña Bilma, the southern flank of the Teno mountains, and the Valle de Arriba plain in which Santiago del Teide sits.

## Waypoints

### (1) Start walk at bus-stop

(28.30719; -16.80465)

Start the walk at the bus-stop in Valle de Arriba, walking in the direction away from Santiago del Teide. At the close-by junction, ignore the direction to your right and carry on into the centre of the old hamlet on the street/road called Camino Real.



### (2) Right at end of Calle Camino Real

(28.30903; -16.80359)

After about 250 m, reaching the end of the Calle Camino Real and the last of the houses, go right for a short distance. (243 m)



### (3) Left and up on old camino

(28.30899; -16.80312)

In less than 50 m, go left and up a rough track. Follow this track as it becomes a narrow path and starts to ascend up the hillside. (289 m)



### (4) Right on TF-82 road to San Jose de los Llanos

(28.31539; -16.80027)

In just over 900 m, upon reaching the main TF-373 road to San Jose de los Llanos, cross the road with care and go right, walking along the verge. Ensure you keep a safe distance from the carriageway. (1.2 km)



### (5) Right at roundabout onto rough road

(28.31839; -16.79711)

In 500 m, upon reaching the roundabout, carefully cross the road and pass the walks information board, taking the rough road to your left signed for the Casa Rural - Caserío de los Partidos. (1.7 km)



### (6) Right to era and Caserío de los Partidos

(28.31667; -16.79186)

In about 600 m, turn right towards the (huge) era (threshing circle) in front of the Caserío de los Partidos buildings. (2.3 km)



### (7) Caserío de los Partidos

(28.31622; -16.79215)

In less than 100 m, you are at the door of the Caserío de los Partidos. Of course, you may wish to take a refreshment or snack here before continuing with walk. When you are ready to move on, cross or go around the era, heading in the direction of the Tomaseche hilltop before you where there is a rough road. (2.4 km)



### (8) Left before large tree

(28.31652; -16.79287)

In less than 100 m from the Caserío, veer left as you approach a very large pine tree. (2.5 km)



### (9) Left and down

(28.31671; -16.79329)

Soon, in less than another 100 m, go left and down a narrow path to re-join the rough road further down. Turn left at the bottom and carry on following the track. (2.6 km)



### (10) Right before quarry/pools area

(28.31561; -16.79432)

In another 100 m, or so, as the track heads down towards a quarry/pools area ahead of you and to your left, turn right and away on a path through the bushes. (2.7 km)



### (11) Sharp right here

(28.31452; -16.79460)

In about 200 m, reaching a clearing in the track, turn sharp right to follow the path between bushes and undergrowth. Carry on as the path rises up a gentle slope and then down again, under the Tomaseche hillside. Views start to open up ahead of you of Montana Bilma. (2.9 km)



### (12) Left at t-junction

(28.31233; -16.79659)

In 400 m, when you descend to a t-junction in the tracks, go left. (3.3 km)



### (13) Right at t-junction

(28.31075; -16.79191)

In 600 m, or so, emerging out of the shallow Barranco de los Ovejeros (shepherds), go right at the t-junction. (3.9 km)



### (14) Left at y-junction

(28.30830; -16.79454)

In another 500 m, veer left at a y-junction on the track. (4.4 km)



### (15) Right at t-junction

(28.30588; -16.79410)

In 300 m, or so, go right at a t-junction. When you eventually reach a tarred road continue downhill for a very short distance looking for an obvious path on your right. (4.7 km)



### (16) Right off tarred road

(28.30546; -16.79578)

In about 200 m, having met the tarred road, go right in about 25 m, or so, and follow the path downhill. (4.9 km)



### (17) Left off tarred road

(28.30670; -16.79737)

In another 200 m, having met the tarred road again, go left off the tarred road at a path opening (with initial steps) which is just a few metres down the road from the point you emerged onto the tarred surface. (5.1 km)



### (18) Left down to village

(28.30732; -16.80030)

In 500 m you will emerge at the outskirts of the Valle de Arriba village where there is a walks signpost and information board (illegible). Carry on down into the village, turning right at the t-junction at the base of the hill, then left when you pass the public water taps, continuing downhill towards your start-point on Calle Camino Real. (5.6 km)



### (19) Left back to bus-stop

(28.30771; -16.80396)

In 400 m, at the t-junction where you meet Calle Camino Real, turn left back to the bus-stop where you started the walk. (6.0 km)



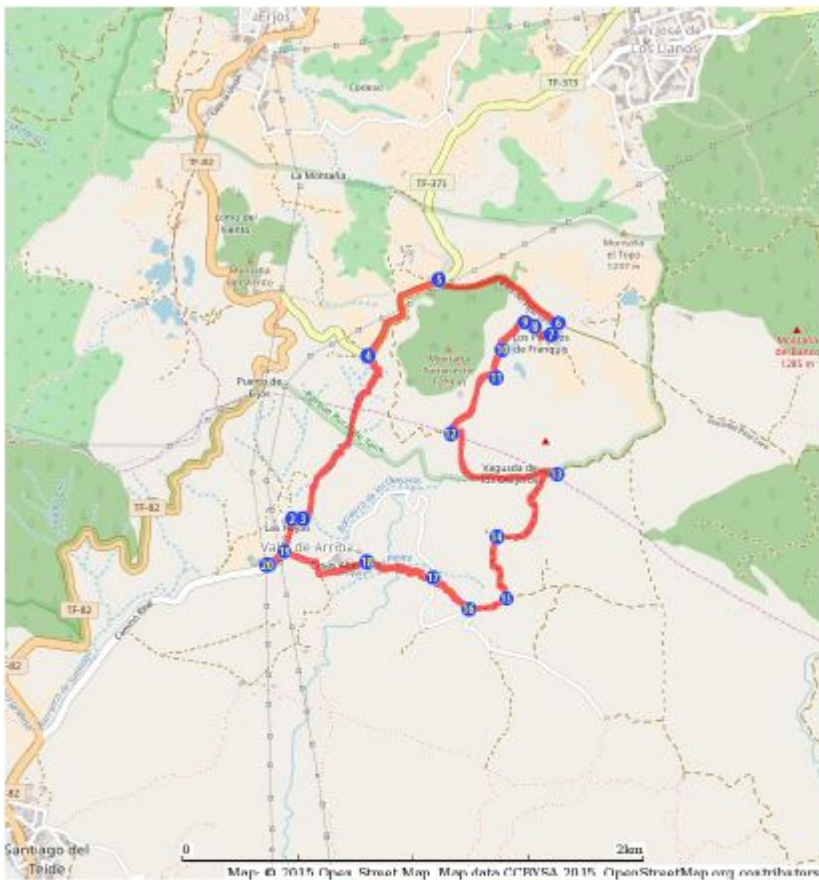
### (20) End walk back at bus-stop

(28.30721; -16.80471)

In another 100 m, or so, you are back at your start-point by the bus-stop. (6.1 km)



## Route Map



### Links:

[Photos from walk](#)

[Download Route Guide](#) (PDF with illustrated Waypoints)

[Download GPX file](#) (GPS Exchange Format)

[Access Walk on Viewranger](#)

[Access Walk on Wikiloc](#)