

The Mack Walks: Short Walks in Scotland Under 10 km

Logie Coldstone-Wells of Poldhu-Auchnerran Circuit (Aberdeenshire)

Route Summary

A very scenic circuit taking in mature open woodland, grassy meadows, a moorland vantage point, and mixed farmland. The curious and charming Poldhu Wells, visited at an early point on the route are an interesting feature of the walk which is mostly over gently undulating ground, with one fairly gradual ascent to a viewpoint on Roar Hill, under Morven.

Duration: 3.25 hours.



Route Overview

Duration: 3.25 hours.

Transport/Parking: No public transport to Logie Coldstone. There is a car-park at the walk start/end point beside the Public Hall.

Length: 10.21 km / 6.34 mi **Height Gain/Loss:** 219 meter.

Max Height: 305 meter. **Min Height:** 175 meter.

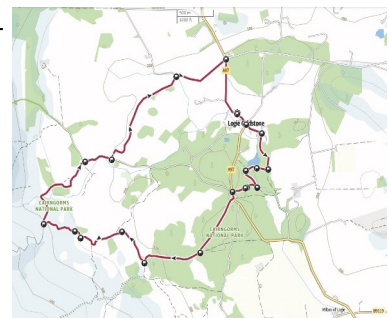
Surface: Moderate. Mostly good paths, forest roads and landrover tracks with 700m section on verge of quiet A97 road. We believe the route is suitable for off-road mobility scooters by taking an alternative route at Waypoint 4 to arrive at the Poldhu Wells at Waypoint 9. See note at Waypoint 4 description. The moorland landrover tracks between Waypoint 15 and Waypoint 17 are very rough and deeply rutted in places.

Difficulty: Medium.

Child Friendly: Yes, if children are used to walks of this distance and overall ascent.

Dog Friendly: Yes, but keep dogs on lead on public roads and near farm animals.

Refreshments: The Airedale in Logie Coldstone (evening hours most days). There are options in Tarland.



Description

This is a well-balanced circuit taking in a variety of natural environments at the western end of the Howe of Cromar, under the heathery mass of Morven Hill and its subsidiary tops. The route starts and finishes in the pretty little hamlet of Logie Coldstone before entering an extensive area of mature open pine forest. After passing a delightful small loch and forest eco-lodges (where you are likely to encounter red squirrels), the walk makes a short diversion to a charming woodland dell to visit ancient mineral (Chalybeate) springs at the Wells of Poldhu. After crossing the A97 road, the route takes in a further section of mature pines, passing another clutch of forest lodges before entering a large birch wood.



The next section is over wide grassy pasture-land, with evidence of abandoned townships, or "clachans". In early Summer, your progress is likely to attract the attention of nesting lapwings, curlews and oyster catchers. A gradual ascent onto the shoulder of Roar Hill then provides exhilarating views over the Howe and its surrounding hilltops, before we descend again to the valley floor. This final section has wide-open views over productive farmland on the return to Logie Coldstone. Legend has it that there were three springs at Poldhu (*Gaelic for "Dark Pool"*), each possessing specific medical properties. The Statistical Account of 1793 described them as follows – "*There is a mineral spring called Poldow to the south of the church, the waters of which some years ago, were much and successfully used for scorbutic and gravelish disorders*". In the 19thC, in line with the Victorian fashion for "taking the waters", two springs were identified and enclosed in granite-dressed wells. Over time, their popularity with visitors waned and after a storm brought down trees over the site of the wells in the 1950's they became hidden in dense undergrowth. However, they were restored in 2008, and now enjoy a tranquil forest setting. Thanks to the Cromar History Group, with others, for the information from their leaflet – "The Wells of Poldhu".

See: Page 1 - <https://photos.app.goo.gl/KH42ktJWgkcuXySi6>

Page 2 - <https://photos.app.goo.gl/PRDoWoyBBVN4v4CA>

Waypoints

(1) Start at the Logie Coldstone Public Hall

<https://w3w.co/wreck.liked.convinces> NJ4338304533
Start the walk at the car-park of the Logie Coldstone Public Hall. Facing the A97 road, go left to follow the footpath, parallel with the road, going towards the centre of the hamlet. Keep going towards the church, ahead of you.



(2) Veer left off A97 onto the Sunnybrae Cottages road

In 190 m, or so, having crossed the junction with the minor road signposted for Migvie, turn left down the dead-end Sunnybrae Cottages road, passing a post-box in the wall of a house on your left side, and the Logie Coldstone church on your right side. (190 m)



(3) Go right down rough road for Blelack Woods

In 250 m, turn right down a rough road heading towards Blelack Woods on the edge of the settlement. Keep going as the road enters the woodland. (430 m)



(4) Go right off rough road onto narrow path

In 500 m, passing a section with an open field and bench on your left side, as the road starts to descend into a hollow, take the narrow path* on your right side into the woodland. (930 m)

**Note: To avoid narrow paths, off-road mobility scooter users should carry on taking the forest road at this point. In 350 m, near the entrance to Blelack House on your left, turn sharp right and follow the forest road for another 340 m to arrive at the footbridge (Waypoint 8) giving access to Poldhu Wells (Waypoint 9).*



(5) At y-junction take path veering left and downhill

In 160 m, or so, at an indistinct y-junction, take the narrow path veering left and downhill into the hollow. Cross the simple footbridge over the burn. You will start to get glimpses of a little loch on your right side through the trees. Soon you will reach a point where you can catch a good view of the loch. When you are ready, keep going, passing between holiday lodges* (look out for red squirrels here!). (1.09 km) *Note: <https://www.cairngormlodges.co.uk/>



(6) Go left at t-junction with forest road

In 170 m from Waypoint 5, go left at a t-junction with a forest road. (1.25 km)



(7) Go right at t-junction on forest roads

In 270 m, go sharp right at a forest roads junction. (1.52 km)



(8) Go right and across footbridge

In about 150 m, you will arrive at a wooden footbridge on your right side (there is a post with a leaflet* holder on your left here). Cross the bridge and go left, which gives access to the Wells of Poldhu area. (1.68 km)

**Note: the holder is for leaflets describing the history of the Poldhu Wells. The holder was empty on the day our walk (June 2022). However, we have included two scanned images of the leaflet in the photos accompanying our walk description.*



(9) Poldhu Wells

In 20 m, or so, you are in the little clearing where there are two stone-built wells, with a bench at the second well. Once you are ready to leave this charming and unusual place, re-trace your steps over the footbridge, then turn right to continue along the forest road. (1.7 km)

**Note: Legend has it that there were three springs at Poldhu ("Dark Pool"), each possessing specific medical properties. The Statistical Account of 1793 described them as follows – "There is a mineral spring called Poldow to the south of the church, the waters of which some years ago, were much and successfully used for scorbutic and gravelish disorders". In the 19thC, in line with the Victorian fashion for "taking the waters", two springs were identified and enclosed in granite-dressed wells. Over time, their popularity with visitors waned and after a storm brought down trees over the site of the wells in the 1950's they became hidden in dense undergrowth. However, they were restored in 2008, and now enjoy a tranquil forest setting. Thanks to the Cromar History Group, with others, for the information from their leaflet – "The Wells of Poldhu".*

See: Page 1 - <https://photos.app.goo.gl/KH42ktJWgkcuXySi6>
Page 2 - <https://photos.app.goo.gl/PRDoWoyBBVvN4v4CA>



(10) Left along A97 for short distance

In 230 m, the forest road arrives at a t-junction with a quiet section of the A97 road. Quiet or not, however, cross the road with care and turn left to walk along the verge for about 80 m before turning right onto a forest road. Keep going on this forest road, eventually arriving at a clutch of holiday lodges*. (1.93 km)

*Note: <https://www.cairngormbothies.co.uk/>



(11) Right at t-junction by Allalogie ruins

In 910 m, as you pass through a group of holiday lodges (Cairngorm Bothies), the forest road arrives at a wide t-junction. Go right here, passing the ruins of Allalogie Croft on your left side. Soon, the conifer forest environment gives way to birch wood, and you pass through a gate. (2.87 km)



(12) Right onto rough road to Auchnerran

In 830 m, at an angled t-junction, go sharp right onto the rough road heading towards Auchnerran Farm. Soon, you emerge from the trees into open grassland with great views up towards Morven Hill and its subsidiary tops. (3.71 km)



(13) Veer left off main track at Auchnerran Hiking Route

In 520 m, as you pass the farmhouse and garden at Auchnerran on your right side, veer left off the main track onto a less distinct grassy road which soon joins a more established rough road heading towards the former croft at Barglass, now apparently empty. Follow the road as it makes its way through the croft buildings, passing the croft cottage on your left side. Go through a farm gate just after passing the cottage and veer left across a grassy field, making your way towards another field gate ahead of you. (4.23 km)



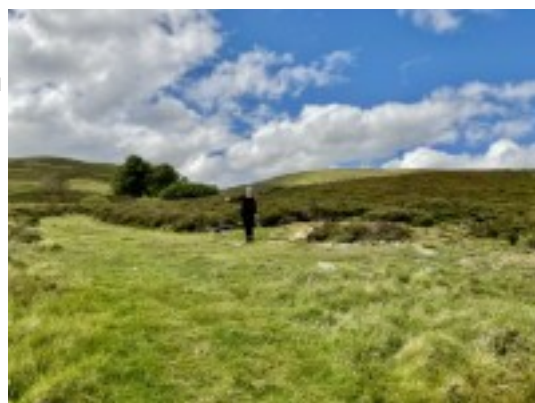
(14) Through gate after passing Barglass

In 690 m from Waypoint 13, and about 120 m from the farm gate at Barglass Croft, go through another field gate. Follow the track as it fords a shallow stony burn and starts ascending gently through grass and heather, with a conifer plantation on your right side. (4.92 km)



(15) Go left and uphill

In 130 m, ascending gently to a rough t-junction, go left and then more steeply uphill onto the heathery hillside of Roar Hill, below Morven Hill. Wonderful views open up behind you over the Howe of Cromar. (5.04 km)



(16) Go right and downhill at highest point

After ascending for 590 m, at a t-junction, and the highest point on the route, the rough landrover track meets another landrover track descending from the summit area of Roar Hill. Go right here and downhill on the very rough and rutted track, eventually crossing a shallow stony burn before passing through a pedestrian gate and a small area of woodland beyond. Then follow the rough road around the edge of a an area of old pasture-land. At a y-junction in the grassy field we advise taking the right fork, close to the trees on your right, but both forks soon join up, in any case. Keep following the rough road as it descends towards the red-roofed Auchnerran Estate office at Bridgefoot. (5.53 km)



(17) Go right at Bridgefoot

In 1.23 km from the highest point on Roar Hill, at Waypoint 16, pass through a gate into the yard of Bridgefoot which takes you past the gable end of the building to the minor public road. Go right along this very quiet access road, looking out for a junction with farm buildings and a house on your left side. (6.76 km)



(18) Go left at Milton of Whitehouse

In 380 m, go left at Milton of Whitehouse to follow the rough road, passing farm buildings and a modern house in an elevated position on your left side. Soon, the rough road takes a sharp bend right away from a field gate ahead of you. Keep following this rough road for about 1.5 km. (7.15 km)



(19) Go right after crossing bridge

In 1.52 km, with the large farm buildings of Kinaldie Farm prominent across fields to your left, and just after the rough road crosses a bridge, take the rough road between fields on your right at the t-junction. Keep going on this rough road until it meets the A97 road in about 800 m, ignoring any deviations to left or right along the way. (8.67 km)



(20) Go right onto A97 road

In 790 m, at a t-junction, go right to walk along the verge of the main A97 road. Although the road is vet quiet for an A road, take due care, and ensure you are facing oncoming traffic. Before too long, you will arrive at you walk start-point at the public hall on the outskirts of Logie Coldstone. (9.45 km)



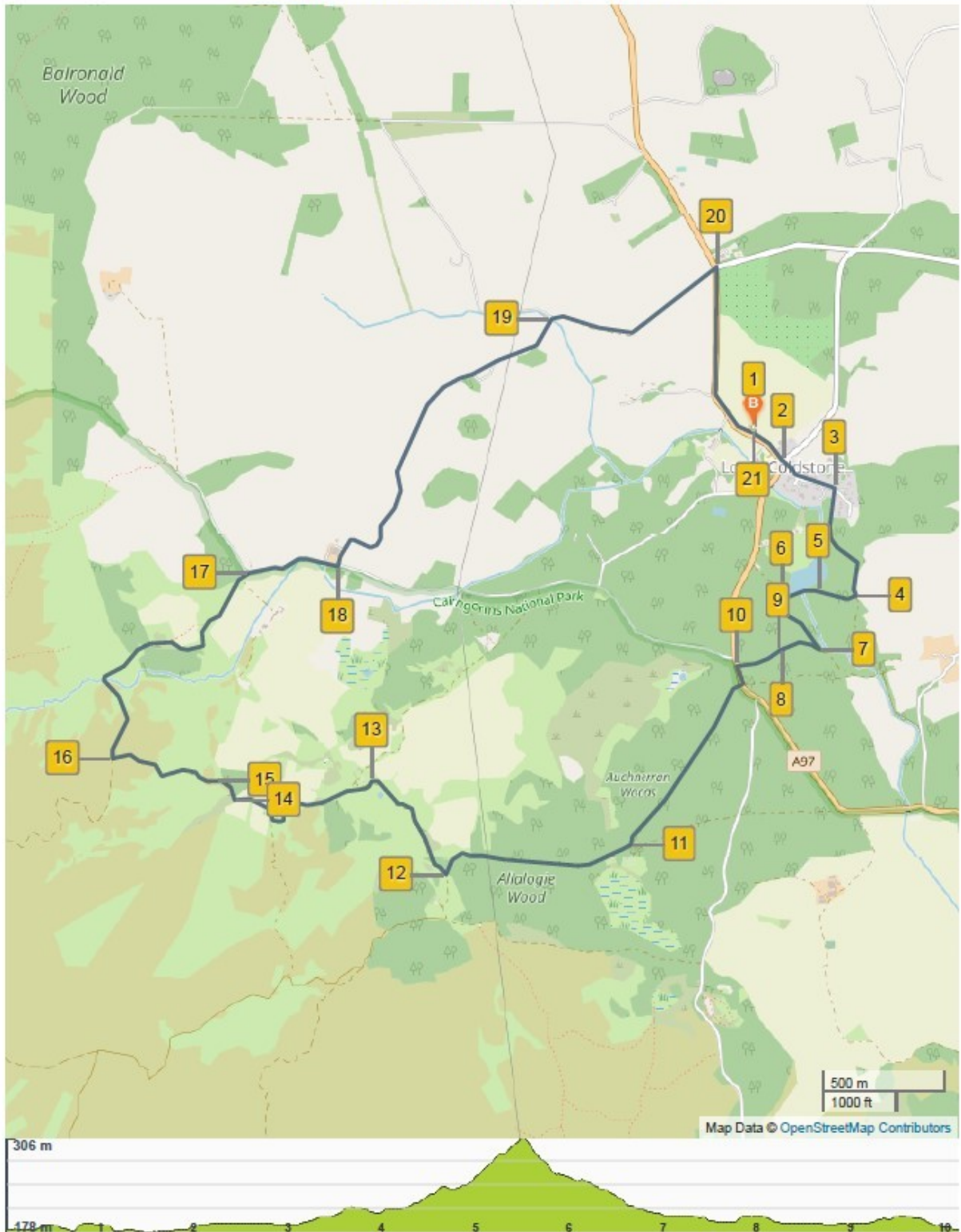
(21) Finish walk back at Logie Coldstone public hall

In 760 m, you will have arrived back at your start-point at the Logie Coldstone public hall. (10.21 km)

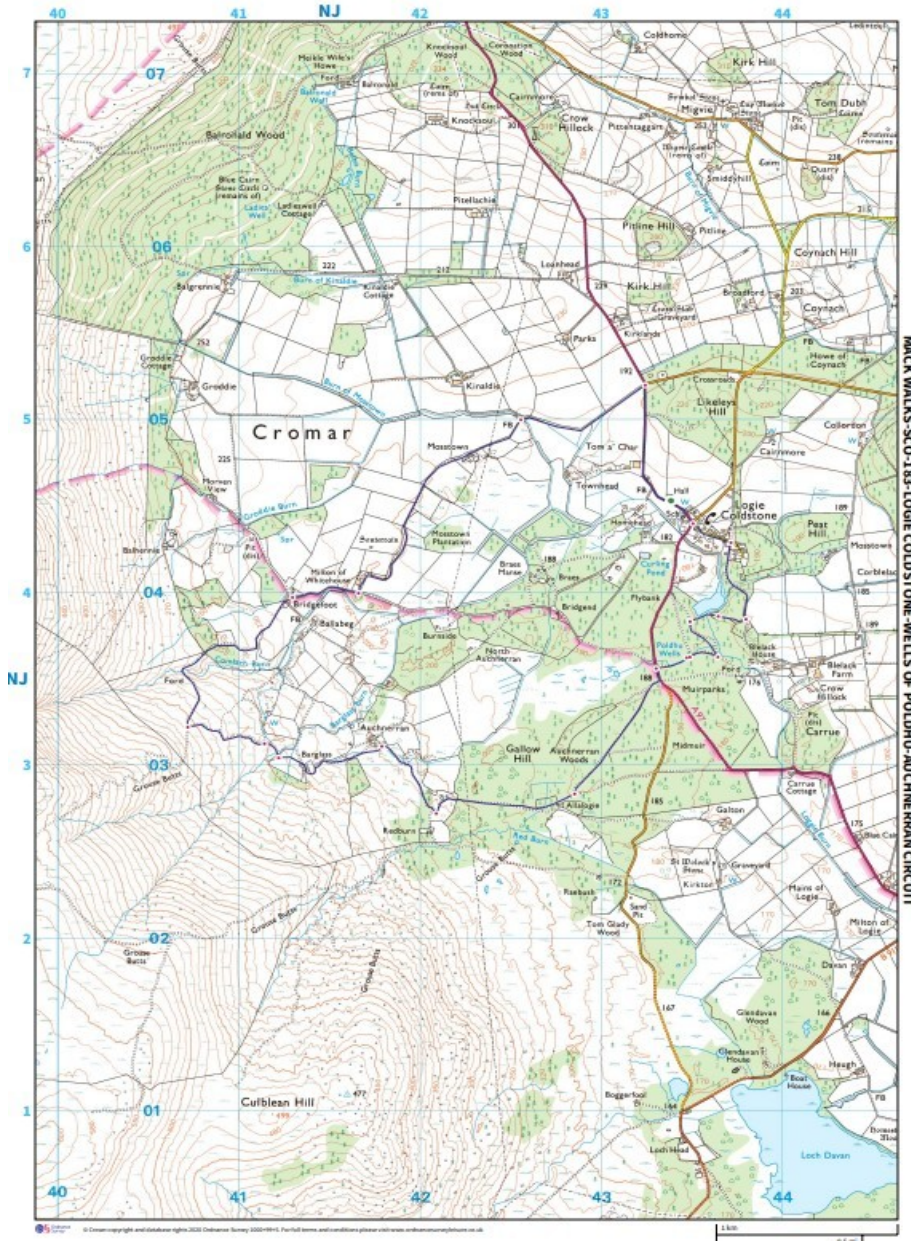


Route Map (with waypoints)

183-Logie Coldstone-Wells Of Poldhu-Auchnerran



Route Map



Links:

[Photos from walk](#)

[Download Route Guide](#) (PDF with illustrated Waypoints)

[Download GPX file](#) (GPS Exchange Format)

[Access Walk on OutdoorActive](#)

[Access Walk on OSMaps](#)

[Access Walk on Alltrails](#)

[Access Walk on Wikiloc](#)